

Styles & Inspiration



Find your style.

◁ Cover: Sabre in Pecan on maple and Magnum in Sage paint

▷ Magnum in White paint and Trinity in Pallisandro Blue TSS

TSS 4-7
 High Gloss Laminate 8-9
 Painted Doors & Colors 10-11
 Stained Wood Doors 12-18
 Construction 19



Katana frameless cabinetry is all about simplicity, with a streamlined selection of door styles, woods and finishes. We also made sure the line fits today's love of clean, modern design, with wood-look TSS and High Gloss Laminate options.

TSS (Thermo Structured Surface)

TSS, or Thermo Structured Surface, styles are named for the process of creation: a textured face is thermally fused and heat stamped to a particleboard core. Pretty technical for a product that looks and feels like natural wood or other materials with the easy-care benefits of laminate!



TRINITY
in Patrese

◀ Trinity in Moselle

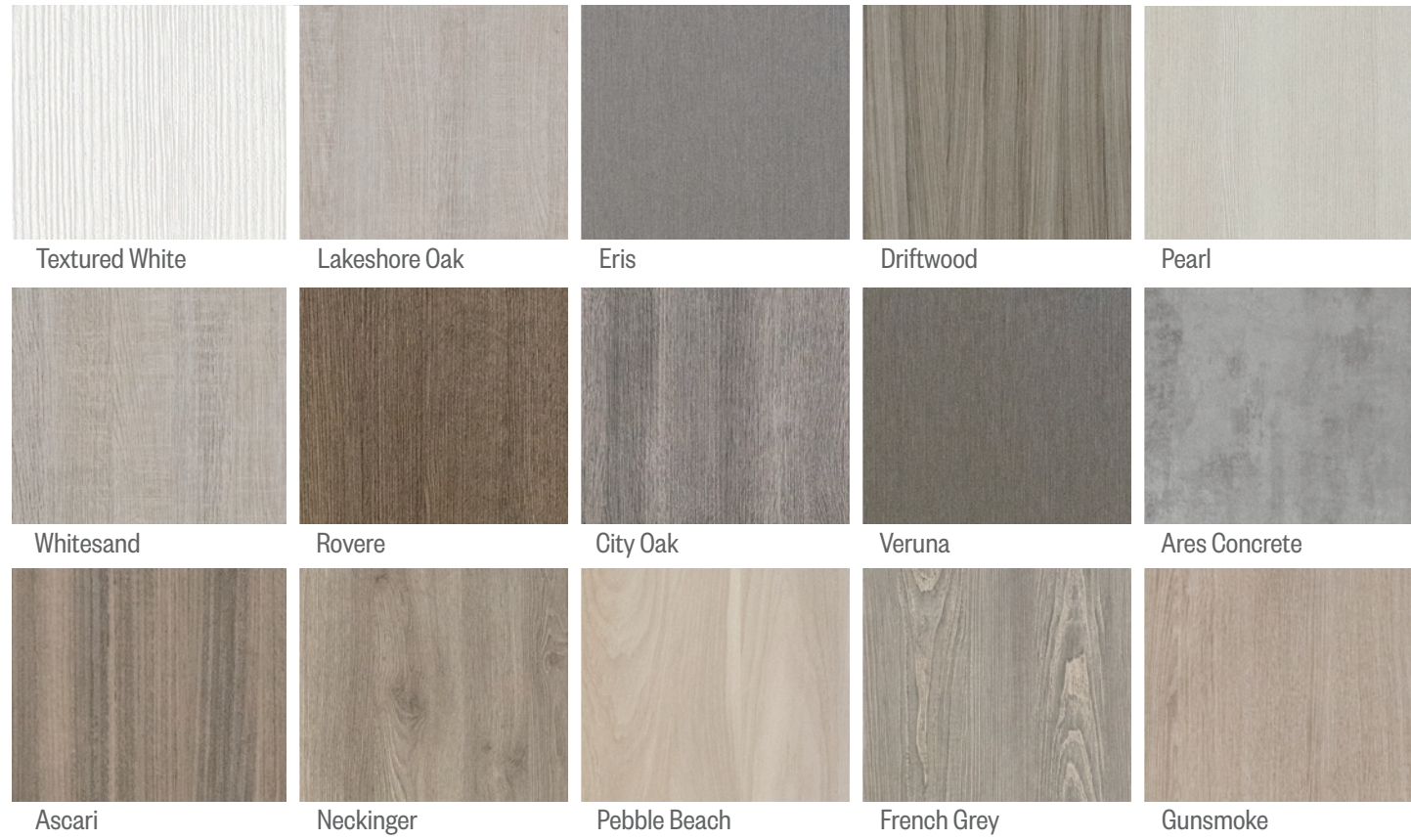
▶ Trinity in Vineyard Oak

TSS: Solar Collection



With over 30 finishes in the program, there is a wide range of colors and textures to choose from. We have organized these selections into three Collections for easier viewing: Solar (warm wood tones), Lunar (neutrals and greys) and Eclipse (dark tones).

TSS: Lunar Collection



TSS: Eclipse Collection



◁ Trinity in
Whitesand and
Magnum in
Midnight

▷ Trinity in
Pallisandro Blue



High Gloss Laminate

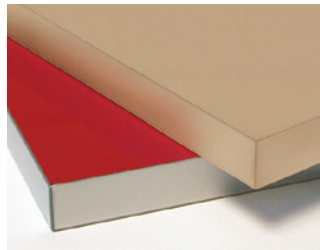
Give a small space maximum impact with High Gloss Laminates. As an accent or the primary design choice, high gloss surfaces bounce light around and make any room feel larger.



PACIFICA
in Khaki w/matching edge



PARAGON
in Dark Grey w/Aluminum edge



Pacifica features a matching edge, while Paragon offers a contrasting edge in 1mm PVC aluminum-look edging. Both are available in the colors at right.

HIGH GLOSS LAMINATE



White Beige Khaki Light Grey Dark Grey



Black



Red



High gloss means highly reflective - a bottle on the countertop in front of a black Pacifica door shows the effect.



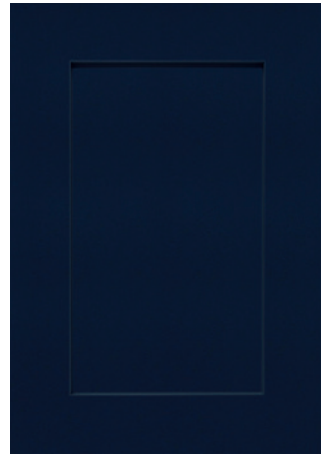
Pacifica in White HGL and Vista in Graphite on maple

Paragon in Dark Grey HGL

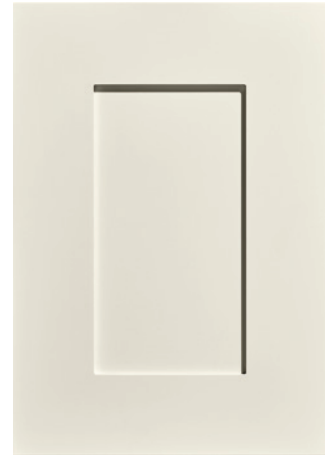
Painted Doors



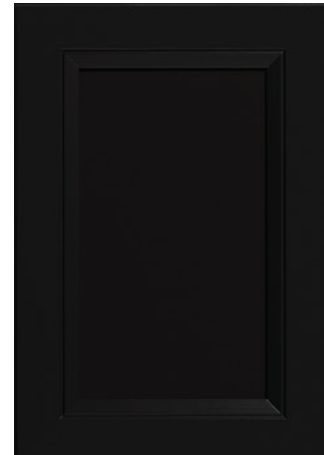
MAGNUM
in Thunder



CARAVEL
in Navy



SABRE
in Snowcap



KINCAID
in Midnight



VENTURA
in Icing



ESSEX
in Ash



TALLADEGA
in White



ROCKPORT
in Sage

Paint Palette

Painted cabinets are a popular choice for the entire kitchen, or as an accent for the island. The smooth, even surface and wide range of color choices are more desirable to many than visible wood grain.



▷ Caravel in Snowcap



Stained Wood Doors

Warm up your home with the natural characteristics of wood cabinetry. From Shaker-inspired looks to doors with interesting details and unique edges, you're sure to find a style that appeals to you. We've included our most-requested species and stains, and let you choose the combination that works best for your home and style.



EDGEWATER
in Cherry/Cinnamon



FRASIER
in Red Oak/Kona



PALENTINA
in Cherry/Graphite



YOSEMITE
in Maple/Dune



△ Burlington in Dune on rustic alder

STAINED WOOD DOORS



PALLANZA
in Rustic Alder/Cinnamon



BRIGHTON
in Maple/Kona



BURLINGTON
in Alder/Cinnamon



FREMONT
in Cherry/Sable



AMHERST
in Alder/Sea Drift



DUNSMUIR
in Maple/Espresso



APOLLO
in Cherry/Pecan



VISTA
in Maple/Chicory

Also available in Rift White Oak. N/A in Rustic Alder.

Glaze

Available with stains and paints, Glaze accentuates the details and lends character to a door style.



Chocolate (on Pecan)



Vanilla (on Espresso)



Licorice (on Sage)



Suede (on Dune)



Pewter on (White)

Alder & Rustic Alder

Shown side-by-side, alder and cherry have very similar grain patterns, although alder tends to have fewer color variations since the heartwood and sapwood are the same color. When exposed to strong sunlight, alder may lighten over time, while cherry will darken.



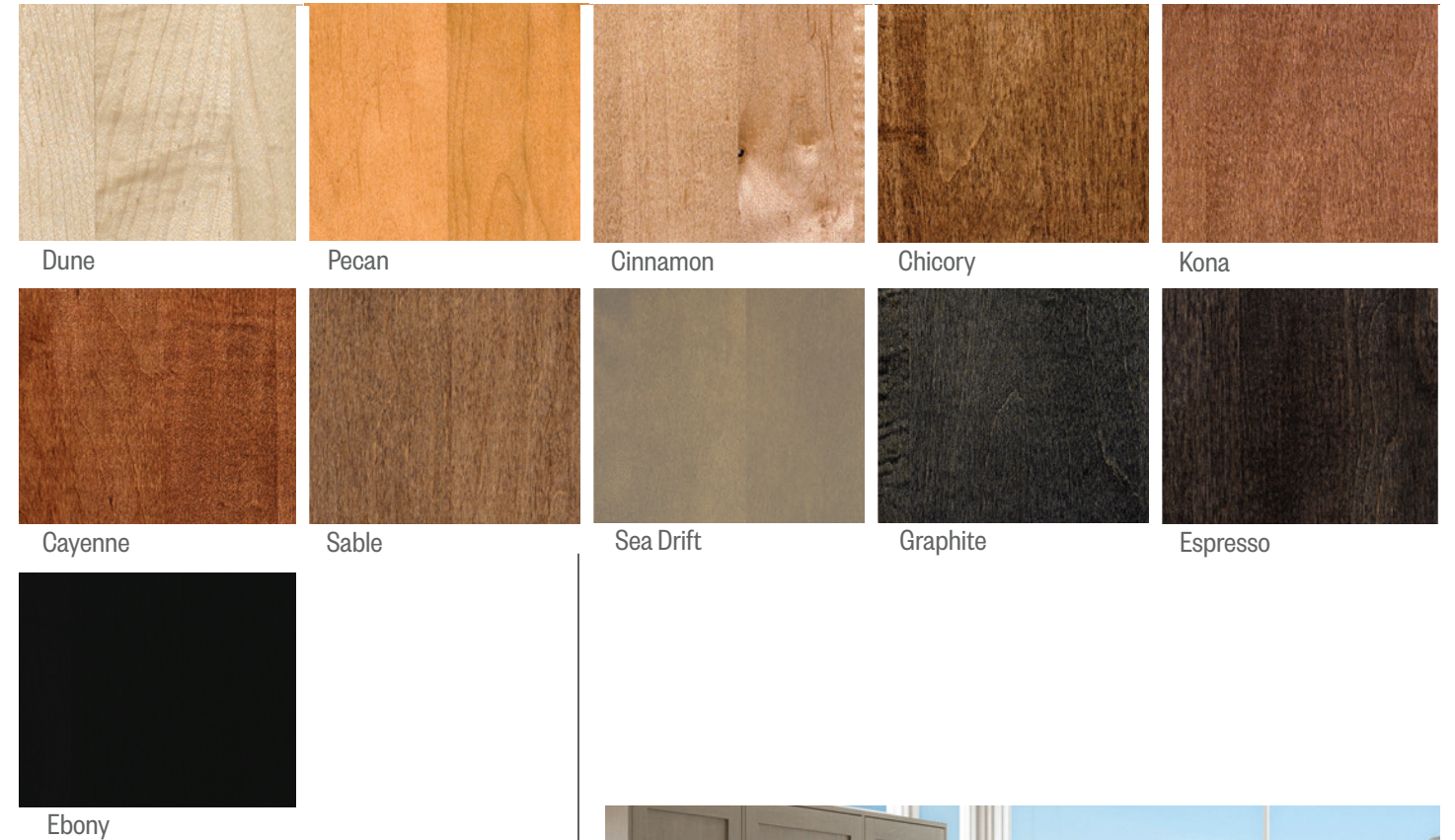
Wood cabinets are constructed from many pieces of material and may exhibit many, or few, of the variations found in a given species. As a natural product, there is potential for noticeable differences in grain patterns or colors to appear on a single drawer front, or throughout a cabinet.

For a more uniform look, opt for a darker stain, or select an engineered material such as TSS or HG Laminate.



Maple

Known for its strength, consistent look and relatively uniform grain pattern, maple has been used to make furniture in the U.S. since the Colonial days. Grown throughout eastern North America, maple is a stiff, strong wood with a smooth surface. Maple varies in color from nearly white to yellow, pink, light purple and even reddish brown. It will darken to golden yellow or an amber hue with age.



◁ Talladega in White paint and Palentina in Cayenne on alder

▷ Pallanza in Sea Drift on Maple



Cherry

It is common to see a variety of grain patterns and colors in a cherry kitchen. Lighter areas of wood were closer to the outside of the tree (sapwood) and the darker areas mark the heartwood, or center of the tree. These color variations may show up on the same board, with a range from off-white to light red or dark, reddish brown.



▷ Fremont in Pecan on Cherry

Rift White Oak for Vista

Rift-cut white oak (RWO) is a dense, strong wood that has long been popular as a building material. The way the wood is cut accentuates the straight, vertical grain and minimizes the loops and arches found in quarter-sawn red oak. RWO is typically light grey to medium brown, with minimal red tones.



Red Oak

Red oak has a very warm appearance, with noticeable red and yellow undertones. Bold grain patterns feature lots of movement and create a slightly raised surface texture and visual interest.

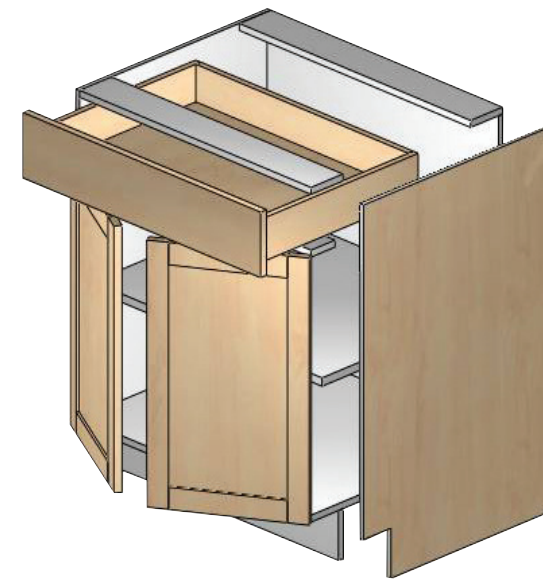


ROCKPORT



Construction

Katana frameless cabinetry offers quality cabinetry at a great price. Like all of our cabinets, Katana features a durable, low-VOC finish that will stand up to just about any household food product or chemical without damage, and we back the line with a comprehensive warranty.



Features

- Cabinet box** is 5/8" thick particleboard top, bottom, sides, toekicks and spreaders and a 1/2" captured back.
- Interior finish** is white melamine on particleboard or woodgrain laminate on plywood. Many cabinet interiors can be finished to match the door species and finish.
- Integral **finished ends** may be added for a finished look.
- Drawer boxes and roll-outs** are 1/2" solid wood dovetail with a natural wood finish or light grey metal.
- Undermount, full-extension **drawer guides** feature soft close.
- One-piece **concealed hinges** include soft close function.
- Full-depth **adjustable shelves** are 3/4" thick particleboard white melamine.

Katana cabinetry is a great choice for those projects that don't require a high level of customization, but still benefit from a range of choices in styles and colors. For custom options and a broader variety of door styles; rustic woods, and unique materials, consider our Millennia frameless line.

◁ Rockport in Snowcap

▷ Burlington in Sea Drift on rustic alder





△ Pallanza in Dune on maple



ISO 9001 Certified | Clean Idle Certified Fleet

This brochure is intended to show the wide range of finishes and materials available - we don't recommend making a final decision from this book or our website. Neither can truly show the variations in color and texture that are present in all of our products. We suggest ordering a door sample in the material, wood, and finish you're considering - it will also make shopping for tile, countertops, flooring and more much easier!

LIT-KATANA | ©2022

CANYON CREEK
Cabinet Company

16726 Tye St SE | Monroe, WA 98272

P: 800-228-1830
www.canyoncreek.com