

DEWILS' GUIDE TO  
**HARDWARE**



# The Basics



## 01. Measurements

Hardware is measured from Center to Center, meaning from screw to screw on the back on the pulls. Keep in mind that this does not mean overall length. In the specifications of the hardware you choose, there will be information for overall length, but you will order according to the standard sizes of center to center. Common Center to Center measurements include 96mm, 128mm, 160mm, and 192mm.

## 02. Finishes

Gone are the days when you feel the need to match your cabinet hardware to your Stainless Steel appliances. Stainless Steel appliances are to a kitchen what denim is to an outfit.

Meaning, everything goes with it. It's also completely okay to not match your hardware to your kitchen faucet and to get even more wild, it's also completely acceptable to mix your hardware finishes in a space (gold hardware on the island, matte black on the perimeter)! Some popular finishes right now include Brushed Gold, Matte Black, and Gunmetal Gray.

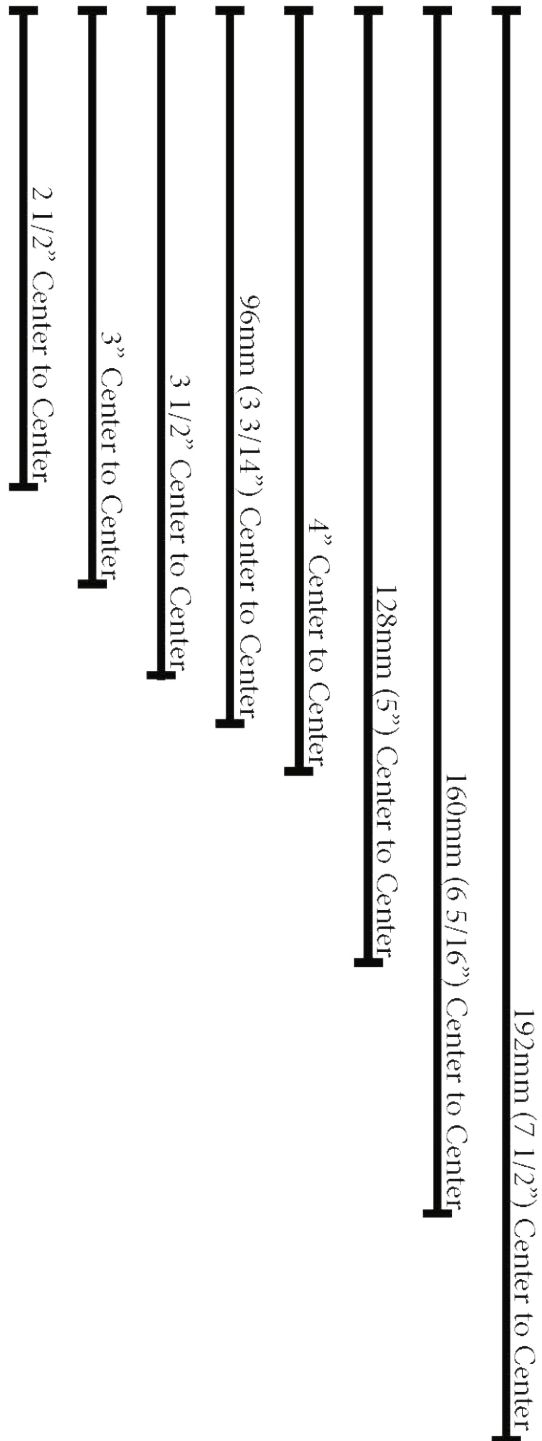
## 03. Costs

Hardware prices can range wildly. You can get knobs and pulls for as low as \$5 each all the way up to \$100+ each. When thinking about how much you want to spend on your hardware, remember that the higher quality hardware (usually starting in the \$13+ range will typically have a more durable finish) and consider over the course of the time you plan to have this space if that extra cost for your hardware will be worth it. Also make sure to touch and feel the hardware before you buy.



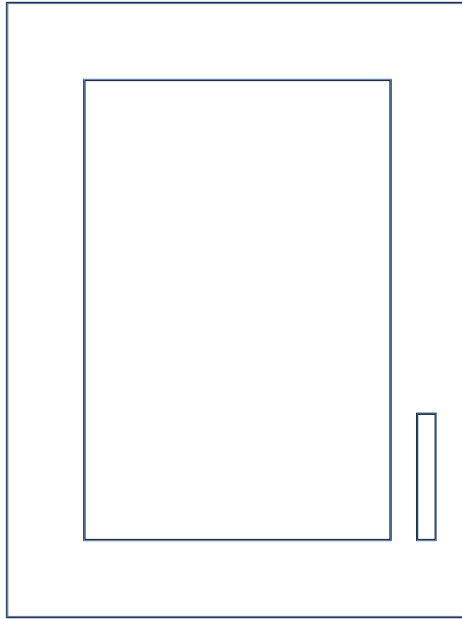


# Hardware Sizing Template

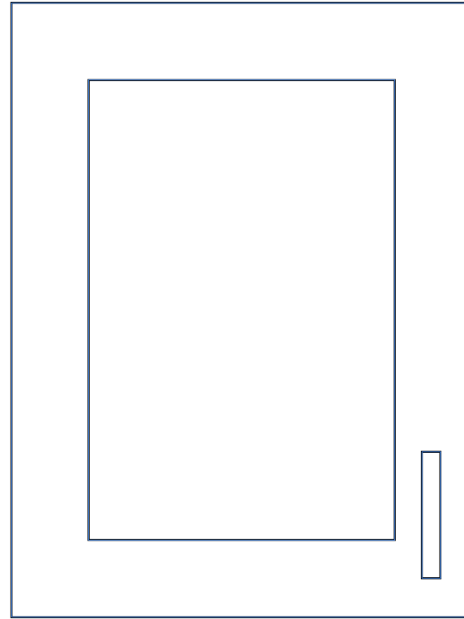


# Hardware Placement

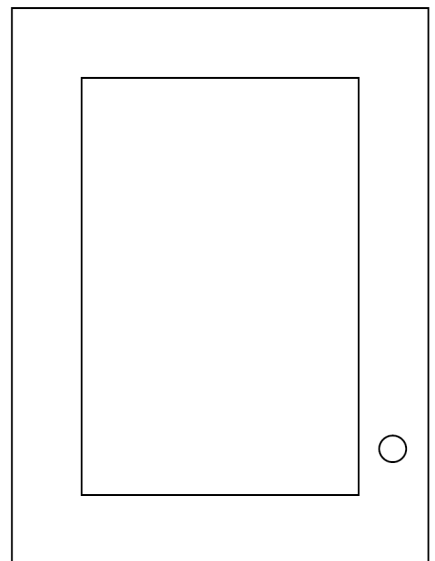
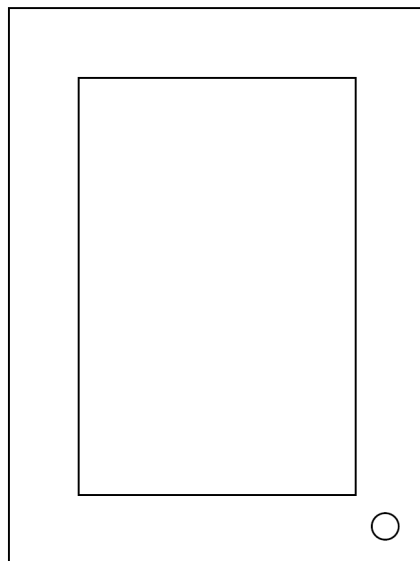
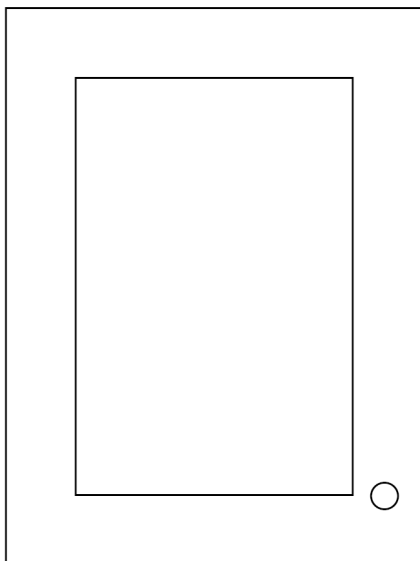
## Doors



Line Up the Hardware  
to the Bottom Rail



Place Hardware in the  
Center of the Bottom Rail



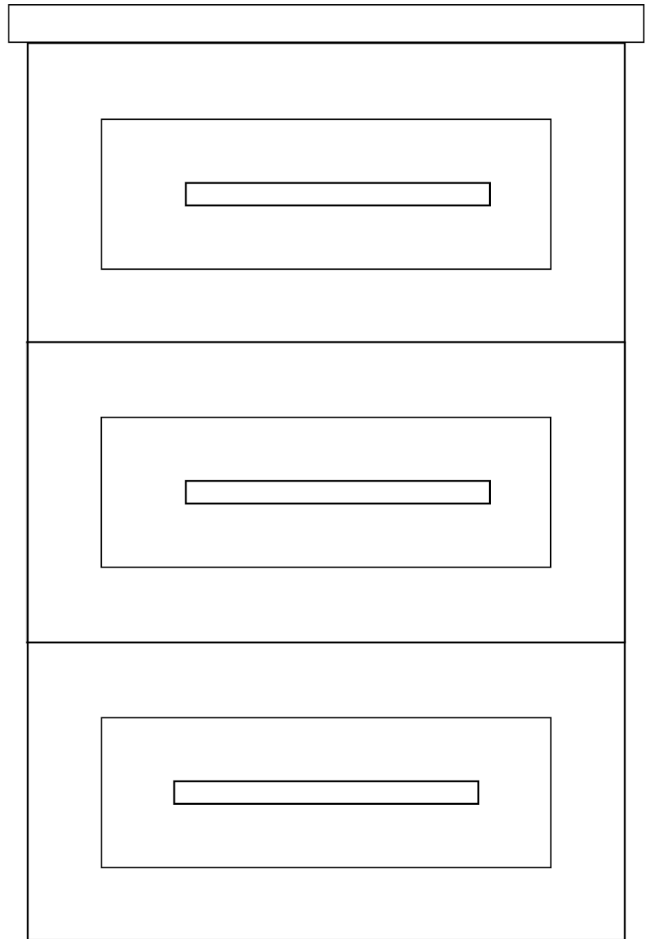
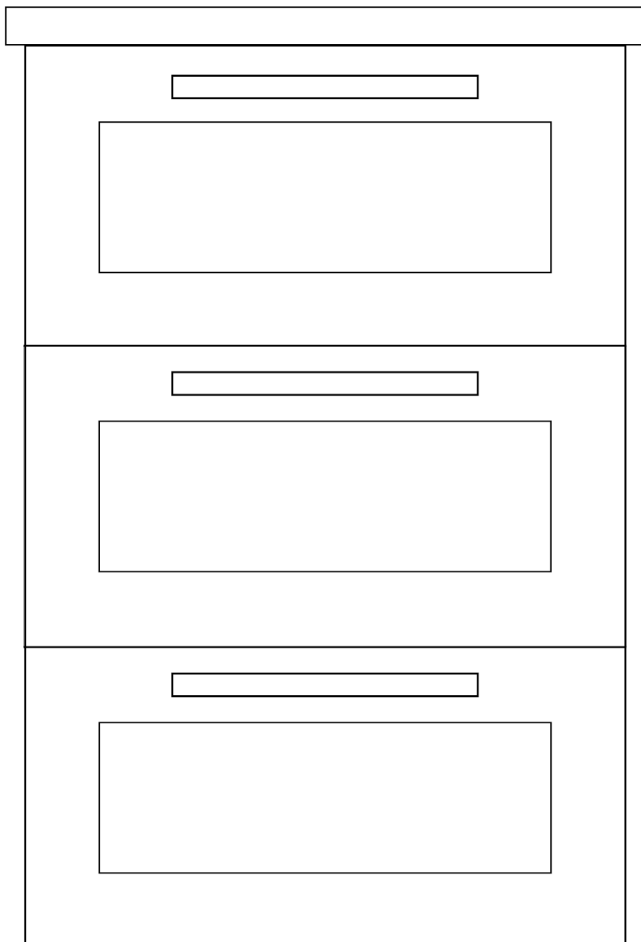


# Hardware Placement

## Drawers



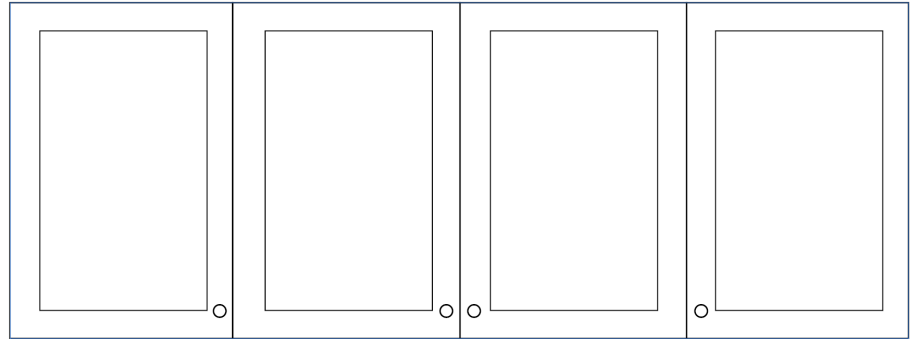
Hardware in  
the Center



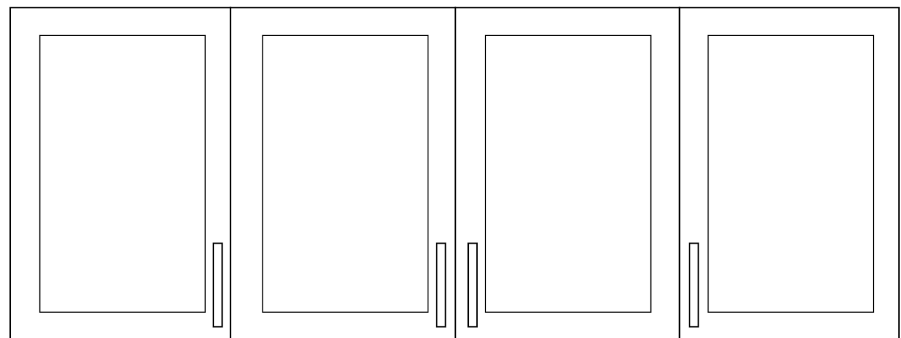
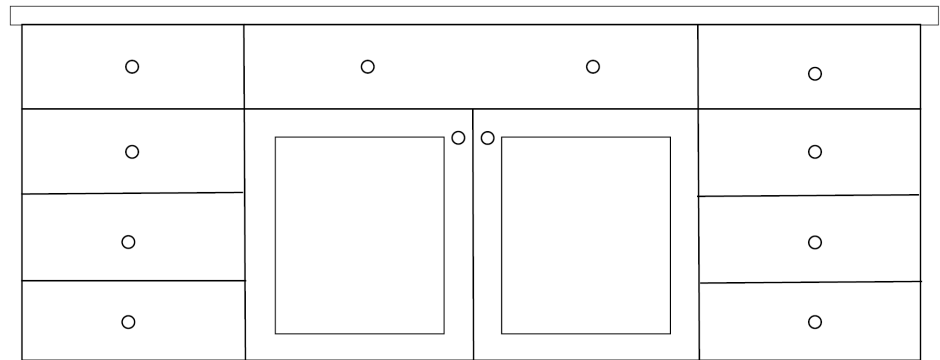
Hardware on  
Upper Rail

# Hardware Placement

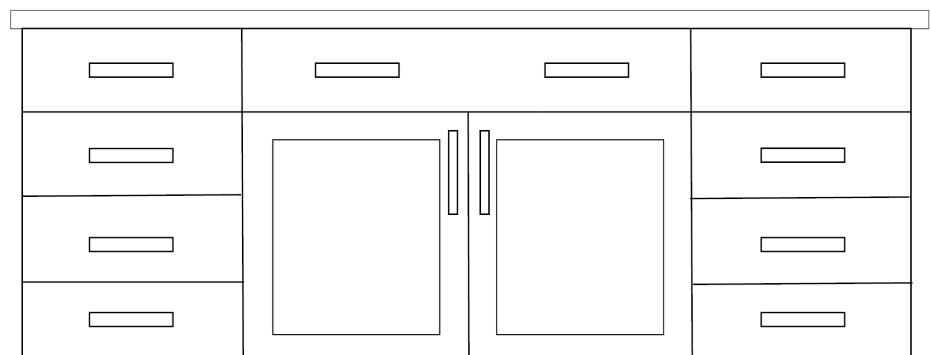
## All Knobs/All Pulls



All  
Knobs



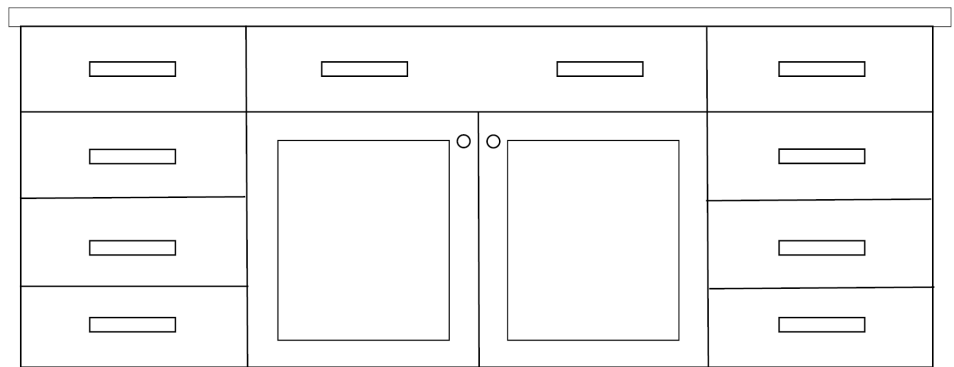
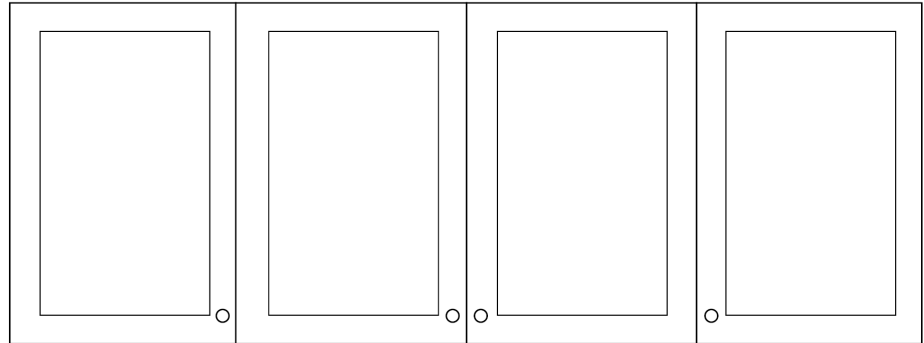
All  
Pulls



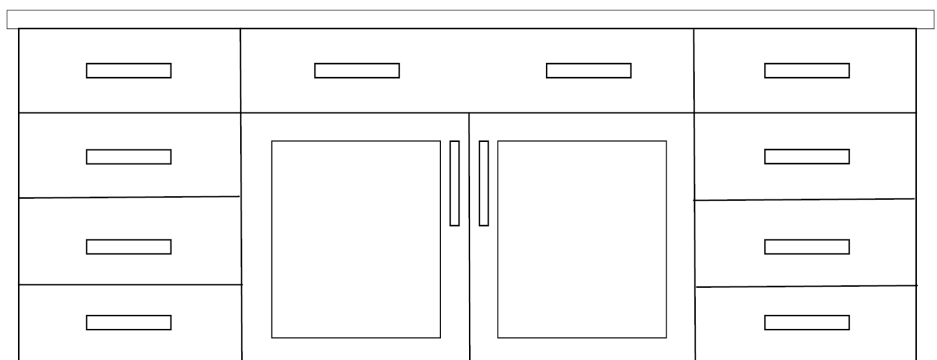
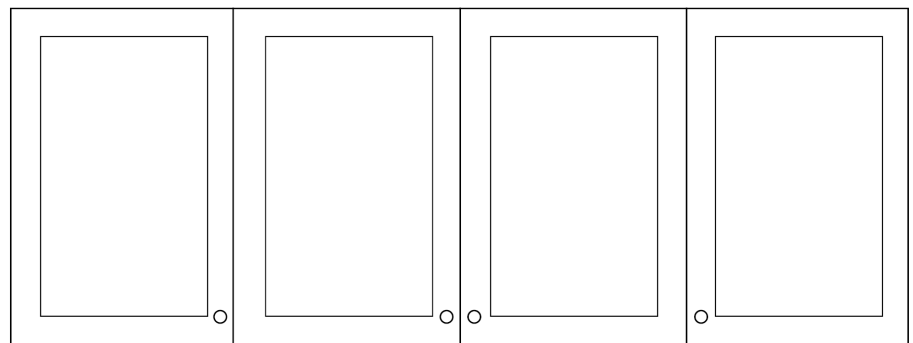


# Hardware Placement Options

Knobs on  
Doors/  
Pulls on  
Drawers

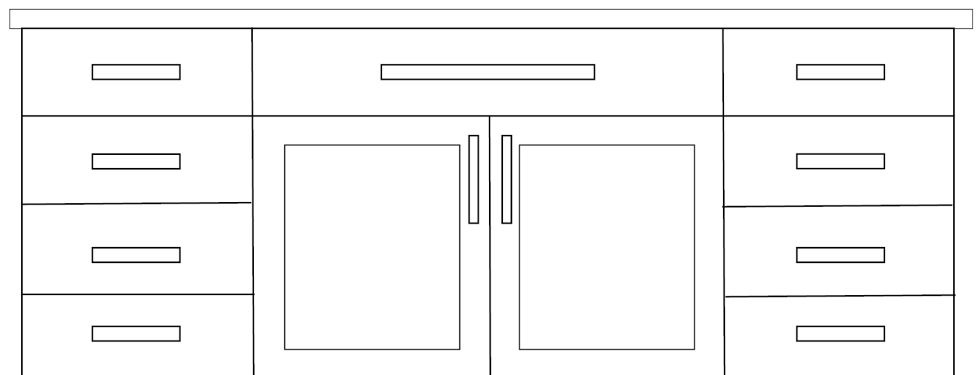
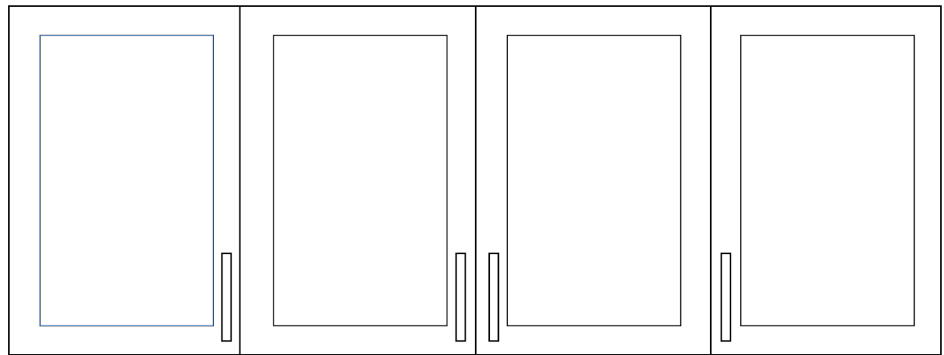


Knobs on  
Uppers/  
Pulls on  
Lowers



# Hardware Placement Options

All Pulls  
with  
Longer Pulls  
on Longer  
Drawers





# hardware selection breakdown



<b>Room:</b>	<b>Total # Needed:</b>	
Style #:	Length:	# Needed:___
Style #:	Length:	---
Style #:	Length:	---

<b>Room:</b>	<b>Total # Needed:</b>	
Style #:	Length:	# Needed:___
Style #:	Length:	---
Style #:	Length:	---

<b>Room:</b>	<b>Total # Needed:</b>	
Style #:	Length:	# Needed:___
Style #:	Length:	---
Style #:	Length:	---

**Total Pieces of Hardware Needed:** \_\_\_\_\_

---

---



# What's Trending Now

## Finishes

Brushed Gold, Matte Black, and Gunmetal are all the most dominant finishes. Other finishes that are also popular are rose gold, copper, two toned and brushed nickel.

---

## Mixed Metals

Picking the same pulls but in different finishes is extremely popular right now. Put matte black on the perimeter cabinets, but brushed gold on the island.

---

## Route for Finger Cabinets

Removing Hardware completely in your kitchen is coming back in. Be mindful that not all door styles or materials can accommodate routing for finger pulls.

---

## Sizes

Knobs: 1" . 1 1/4" . 1 1/2"

Pulls: 128mm (5") and 160mm (6 5/16") are the most common. 192mm (7 1/2") is great for a long drawer or a more modern look

---

*Details*